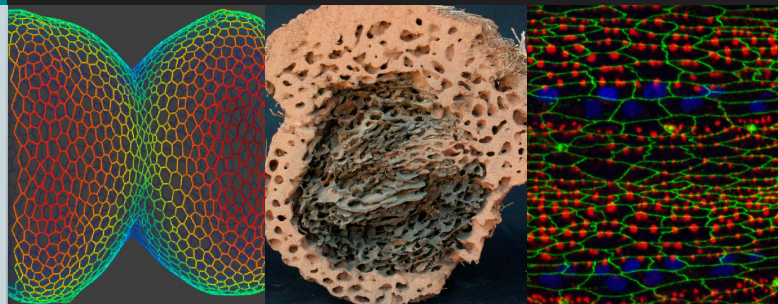




recruits new research groups



[HTTP://CBI-TOULOUSE.FR/ENG/](http://CBI-TOULOUSE.FR/ENG/)



We are pleased to announce the launch of the first CBI call for the recruitment of new groups. The CBI (Center for Integrative Biology of Toulouse), presently composed of 40 groups (*approx.* 450 people), will be reinforced by its new building on the University of Toulouse campus in Rangueil. In line with this expansion, the CBI will hire additional groups over the coming years.

The goal of the CBI is to foster research leading to the elucidation of fundamental aspects of the structure and function of complex biological systems, and covering all scales from individual molecules to the whole organism. CBI research is highly multidisciplinary, combining a wide range of research fields including genetics, epigenetics, microbiology, cell biology, chromatin/chromosome dynamics, developmental biology, neurosciences, collective animal behavior, as well as computational and systems biology. CBI groups have access to state-of-the-art core facilities, including photonic and electron microscopy, and a computer cluster for large data analysis and simulation. Deep sequencing and proteomics are also available at close proximity. Additional in-house facilities include animal facilities housing bees, *Drosophila*, zebrafish, *Xenopus* and mice. The Center provides a highly collaborative environment that is firmly embedded within the scientific community of Toulouse.

We are seeking outstanding candidates addressing fundamental principles across the spectrum of CBI research fields. All applications fitting with CBI scientific interests will be considered. Nonetheless, candidates with strong background in computational or theoretical approaches are particularly encouraged to apply to this first call. Current priorities are:

➤ **A full professor in bacterial genetics**, with emphasis on molecular and integrative approaches. Experience in interdisciplinary research will be particularly considered.

➤ **A group leader in computational biology** (networks, large data-set [image, NGS, and behavioral] analysis, etc.) or in computational science (data-based modeling). We also encourage applicants with an interdisciplinary background in physics (statistical physics, non-linear dynamics and complex systems) and mathematical modeling connected with research themes of the CBI.

Candidates are expected to meet the criteria required to apply successfully for national and international funding, and for permanent French research positions (University of Toulouse, CNRS or INSERM). Selected candidates will have access to office and lab space for a team of 8 to 10 persons, to all CBI facilities and to various other local facilities.

Applications (in English) should include a cover letter explaining the interest of the candidate in joining the CBI, a CV, contact information for three references and a concise description of achievements and of future research programs. Please send this information as a single file named LASTNAME_CBI2016.pdf to cbi.call@univ-tlse3.fr. Short-listed candidates will be invited to present their research interests and future research plans during the spring of 2016.



DEADLINE FOR APPLICATIONS

FRIDAY
JANUARY 15
2016